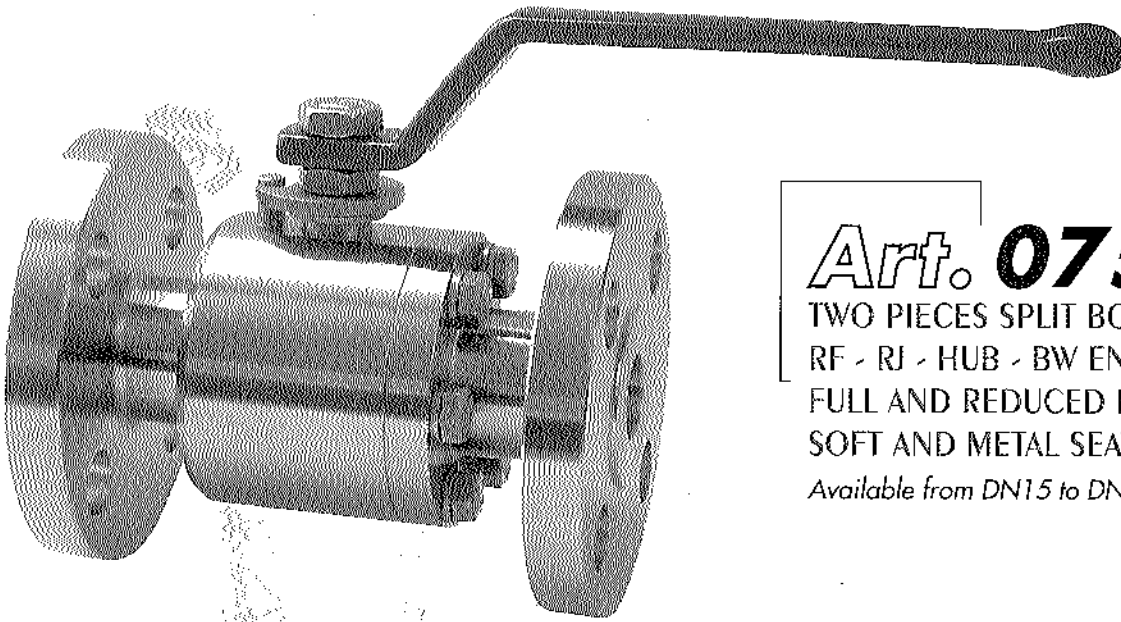




**FLOATING BALL VALVES SPLIT BODY**

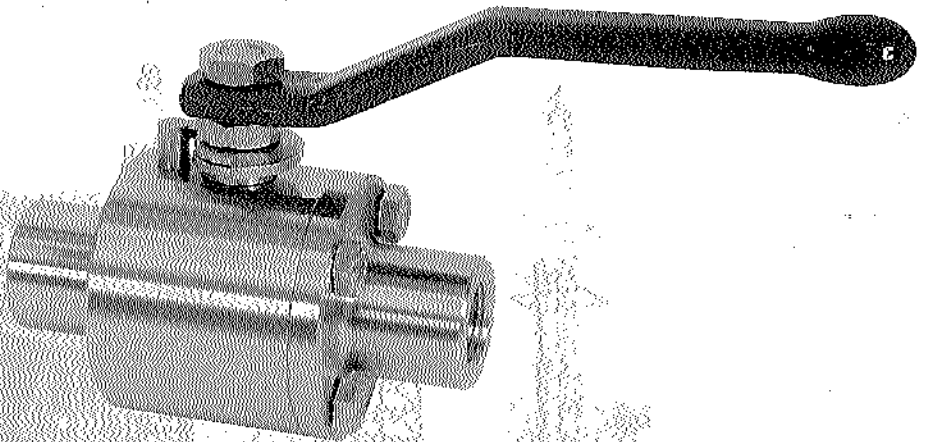


**Art. 075**

TWO PIECES SPLIT BODY  
 RF - RJ - HUB - BW ENDS  
 FULL AND REDUCED BORE  
 SOFT AND METAL SEATED  
 Available from DN15 to DN200

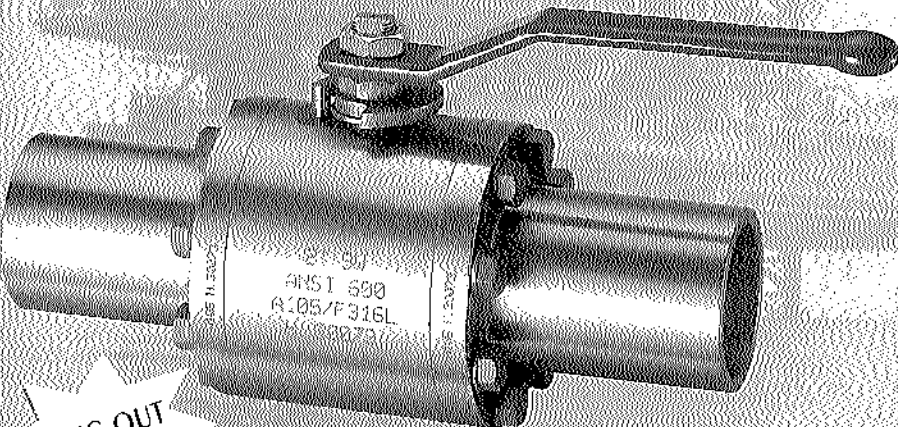
**Art. 022**

TWO PIECES SPLIT BODY  
 FULL AND REDUCED BORE  
 NPT - BSP GAS M. AND IF THREADED ENDS  
 BW - SW - PE NIPPLED ENDS  
 SOFT AND METAL SEATED  
 NIPPLES INTEGRAL WITH THE BODY  
 Available from DN8 to DN50



**Art. 020**

THREE PIECES SWING OUT BODY  
 NPT - BSP GAS M. AND IF THREADED ENDS  
 BW - SW - PE NIPPLED ENDS  
 SOFT AND METAL SEATED  
 NIPPLES INTEGRAL WITH THE BODY  
 Available from DN 8 to DN50



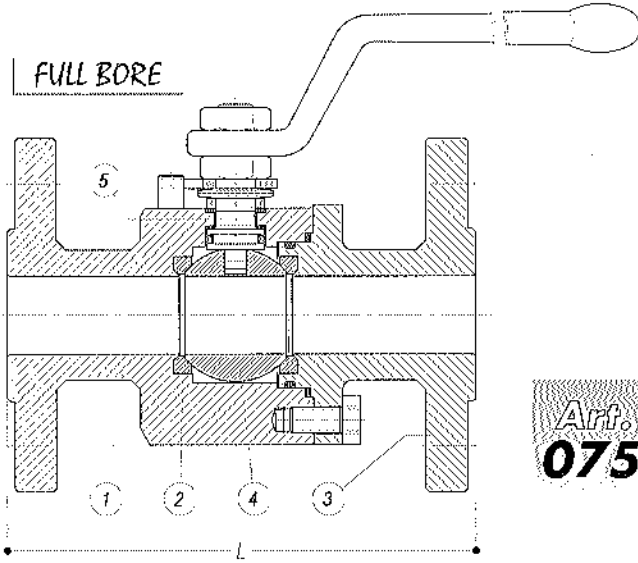
SWING OUT BODY

Available in class 150 300 600 800 900 1500 2500 lbs  
 3000 5000 6000 10000 psi

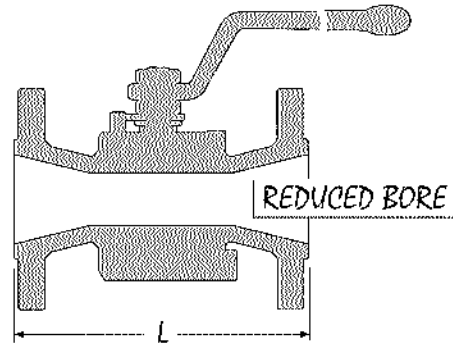
<b>FULL BORE</b>	1/4"	3/8"	1/2"	3/4"	1"	1 1/4"	1 1/2"	2"	2 1/2"	3"	4"	6"	8"
<b>DN</b>	8	10	15	20	25	32	40	50	65	80	100	150	200
<b>REDUCED BORE</b>					1"	1 1/4"	1 1/2"	2"	2 1/2"	3"	4"	6"	8"
					3/4"	1"	1 1/4"	1 1/2"	2"	2"	3"	4"	6"



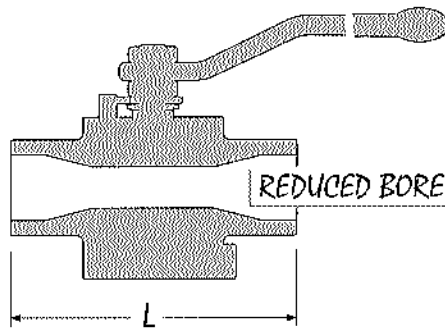
# FLOATING BALL VALVES SPLIT BODY



Art. **075**

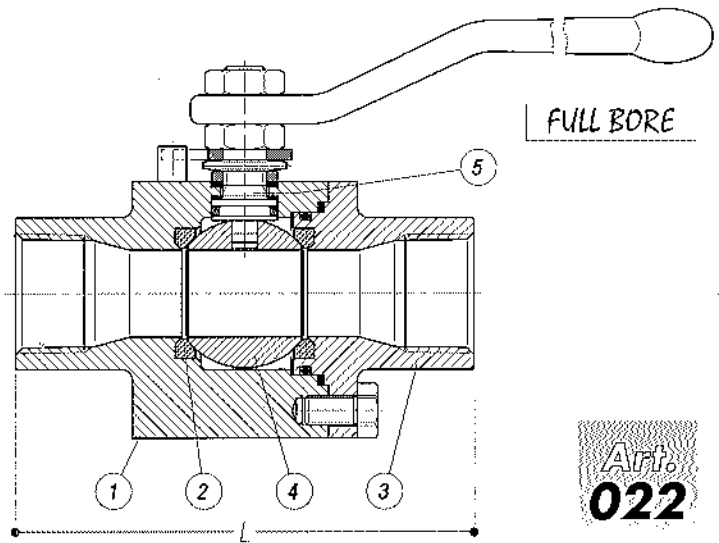


**T** DN15 to DN200 - 1/2" to 8"    **R** DN15 to DN200 - 1/2" to 8"

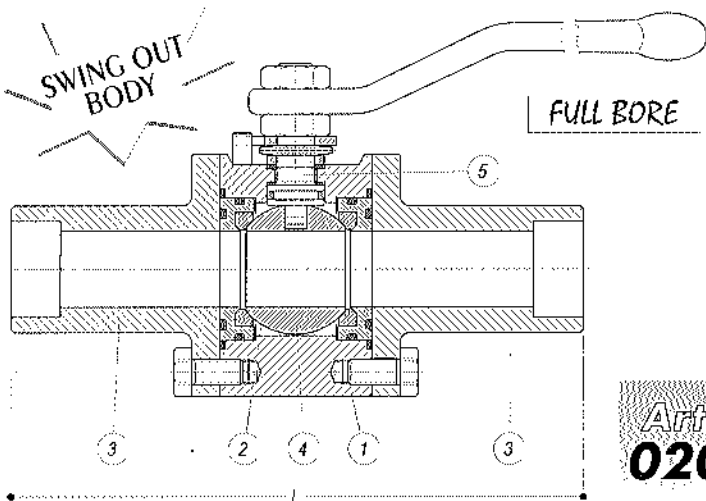


**T** DN 8 to DN 50 - 1/4" to 2"    **R** DN 25 to DN 50 - 1" to 2"

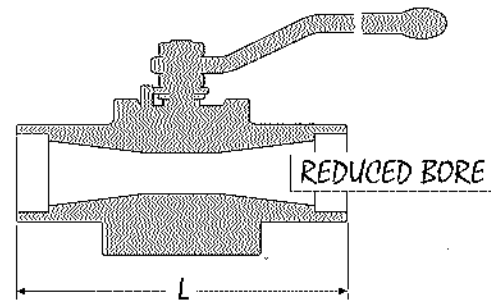
**NIPPLES INTEGRAL WITH THE BODY**



Art. **022**



Art. **020**



**T** DN 8 to DN 50 - 1/4" to 2"    **R** DN 25 to DN 50 - 1" to 2"

**NIPPLES INTEGRAL WITH THE BODY**



	CS	LTCS	SS	22/25% Cr Duplex
Pos Part Name	Carbon Steel	Low Temperature Carbon Steel	Stainless Steel	22Cr Duplex and 25Cr Super Duplex Alloys
1-3 Body/Connector	ASTM A 105 - A 105N	ASTM A 350 gr LF2	ASTM A 182 gr F316 ASTM A 182 gr F316L	ASTM A 182 gr F51 ASTM A 182 gr F53 or F55
2 Seat / Insert	R PTFE • PEEK • PCTFE • ERTALON® • DEVLON® • NYLON			
4 Ball	ASTM A 182 gr F316 / F316L ASTM A 105 - A 105N + ENP ASTM A 350 gr LF2 + ENP	ASTM A 182 gr F316 / F316L ASTM A 350 gr LF2 + ENP	ASTM A 182 gr F316 / F316L ASTM A 182 gr F51	ASTM A 182 gr F51 ASTM A 182 gr F53 or F55
5 Stem	ASTM A 182 gr F316 / F316L ASTM A 182 gr F51 ASTM A 105 - A 105N + ENP ASTM A 350 gr LF2 + ENP ASTM A 546 gr 630 (17-4-Ph) AISI 410 + ENP	ASTM A 182 gr F316 / F316L ASTM A 182 gr F51 ASTM A 350 gr LF2 + ENP ASTM A 546 gr 630 (17-4-Ph) AISI 410 + ENP	ASTM A 182 gr F316 / F316L ASTM A 182 gr F51	ASTM A 182 gr F51 ASTM A 182 gr F53 or F55
Fire Safe Seats	EXPANDED GRAPHITE			
Bolts / Nuts	ASTM A 193 B7 • A 194 2H ASTM A 193 B7M • A 194 2HM	ASTM A 320 L7 • A 194 gr 7 ASTM A 320 L7M • A 194 gr 7M	ASTM A 193 B8 • A 194 8 ASTM A 193 B8M • A 194 8M	ASTM A 193 B8 • A 194 8 ASTM A 320 L7 • A 194 gr 7 ASTM A 320 L7M • A 194 gr 7M

**MATERIAL SELECTION**

- ENP = Electroless Nickel Plated 30mic, 50 mic or 75mic
- Hot Dip galvanized Bolts available upon request
- P.T.F.E. coated bolts available upon request
- Other alloys available upon specific request
- ASTM A 182 gr F44 • MONEL K500 - UNS N05500 • TITANIUM B 348 • NICKEL ALLOY 625-UNS N06625 • NICKEL ALLOY 825-UNS N08825

SIZES AVAILABLE AND FACE TO FACE DIMENSION

Art. **075**

FULL BORE	1/2"	3/4"	1"	1 1/4"	1 1/2"	2"	2 1/2"	3"	4"	6"	8"
DN	15	20	25	32	40	50	65	80	100	150	200
REDUCED BORE			1"	1 1/4"	1 1/2"	2"	2 1/2"	3"	4"	6"	8"
			3/4"	1"	1 1/4"	1 1/2"	2"	2"	3"	4"	6"
ANSI 150	RF 108 RTJ 121	117 130	127 140	140 152	165 178	178 191	191 203	203 216	229 241	394 406	457 470
ANSI 300	RF 140 RTJ 151	152 165	165 178	178 191	191 203	216 232	241 257	283 298	305 321	403 419	
ANSI 600	RF 165 RTJ 165	191 191	216 216	229 229	241 241	292 295	330 333	356 359	432 435		
ANSI 900	RF 216 RTJ 216	229 229	254 254	280 280	305 305	368 371	419 422	381 384			
ANSI 1500	RF 216 RTJ 216	229 229	254 254	280 280	305 305	368 371	419 422				
ANSI 2500	RF 264 RTJ 264	273 273	308 308		384 387	451 454					

Art. **022**

FULL BORE	1/4"	3/8"	1/2"	3/4"	1"	1 1/4"	1 1/2"	2"
DN	8	10	15	20	25	32	40	50
REDUCED BORE					1"	1 1/4"	1 1/2"	2"
					3/4"	1"	1 1/4"	1 1/2"
ANSI 800	FULL 120 REDUCED 120	120 120	120 120	130 130	140 130	170 140	180 170	200 180
ANSI 1500	FULL 130 REDUCED 130	130 130	130 130	140 140	160 140	180 160	200 180	220 200
ANSI 2500	FULL 150 REDUCED 150	150 150	150 150	170 170	200 170	220 200	240 220	270 240

Art. **020**

FULL BORE	1/4"	3/8"	1/2"	3/4"	1"	1 1/4"	1 1/2"	2"
DN	8	10	15	20	25	32	40	50
REDUCED BORE					1"	1 1/4"	1 1/2"	2"
					3/4"	1"	1 1/4"	1 1/2"
ANSI 800	FULL 95 REDUCED 95	95 95	95 95	140 140	155 140	170 155	185 170	205 185
ANSI 1500	FULL 140 REDUCED 140	140 140	140 140	160 160	170 160	185 170	210 185	230 210
ANSI 2500	FULL 150 REDUCED 150	150 150	150 150	170 170	200 170	220 200	240 220	270 240

FOR ART. : 075 - 022 - 020

- FIRE-SAFE SYSTEM API 607 4th Ed
- ANTISTATIC
- TA-LUFT - 3.1.8.4
- CONSTRUCTION: API 6D
- CONSTRUCTION: B16.34
- CONSTRUCTION: BS 5351

**ON REQUEST**

- Option: LOCKING DEVICE
- EXTENDED STEM

ONLY for ART. : 022 - 020

- These dimensions are indicative and subject to changes depending on actual nipples.
- Nipples are available in different lengths, such as: 40 mm - 60 mm - 80 mm - 100 mm - 150 mm.

FOR ART. : 075 - 022 - 020

- All types available also in class : 3000 - 5000 - 6000 - 10000 psi
- All valves are available with any ends finish : RF - RFS - RTJ - HUB - BW - SW - NPT (F/M) - BSP (F/M) - GAS